

Digital Wireless USB DVR

LCDW-1015

Instruction Manual



PLEASE READ CAREFULLY AND SAVE



CE FC



CONTENTS

Notice.....	01
Description.....	01
Technical data.....	02
System.....	03
Function and Feature.....	04
Install.....	05
System operate instruction.....	08
Main screen.....	08
Quad View Display.....	09
System Setting layout.....	10
Web Server.....	11
MMS Server.....	12
Basic setup.....	16
Image adjust.....	17
Record setup	19
Add new schedule.....	20
Motion Detect.....	22
Add new Detect Area.....	23
Alert setting.....	23
Playback.....	24
Package List.....	25
FQA.....	25

Safety and Hazard Notice



Damages caused by non-compliance with this operating manual lead to the expiration of the warranty! We will not assume any liability for subsequent damages! We will not assume any liability for subsequent damages to items or persons caused by improper handling or non-compliance with the safety notice! Any warranty claim will be null and void in such cases.

NOTICE

1. Please connect the parts of all demands first then open power supply.
2. Please use AC/DC power adaptor which we offer.
3. Please far away from water or liquid, to avoid short circuit of device.
4. Please send this equipment out of the baby's reach.
5. Please pull power adapter, If not use for long time.
6. Don't cast, bump or remove cameras or monitor.
7. When a lightning storm, please turn off the power supply temporarily.
8. Please make sure that the power cord in equipment operation process should not be squeezing or be sharp objects damage.

Description



Wireless Camera



TECHNICAL Data

Wireless Camera

Image sensor	1/5" COLOR CMOS
Picture Element	640(H)×480(V)
Scanning System	2:1 interlace
Gamma Characteristic	0.45
S/N ratio	≥48dB
Frequency rang	ISM 2400MHz~2525MHz
Backlight Compensation	Auto
TX power	15dBm
Electronic Shutter	AUTO:1/50(1/60) to 1/100 .000 sec
Lens	3.6mm
Frame rate	8-10fps(VGA),25-30fps(QVGA)
Power Source	DC12V±10%
IR Distance	15 meter
Unobstructed Effective Range	100-150 meter
Waterproof Grade	Ip65
Motion Detect Distance	10meter (centre)

Adaptor

Input voltage	100-240V AC
Output voltage	12V DC
Operating frequency	50/60Hz
Power output	12V*500mA

Techniacal data

Wireless USB receiver

Supply voltage	USB SUPPORT
Demodulation Type	FM
Receiving Sensitivity	≤-81dBm
Video compression	WMV
Audio compression	ADPCM
Dimension (W*L*H)	10*2.7*1.5cm(Excluding Antenna)
Power consumption	220mA
USB driver	Win98,2000,XP,Vista
Channel Bandwidth	1.8~2MHz
Operating Temperature	-10~60°C

System

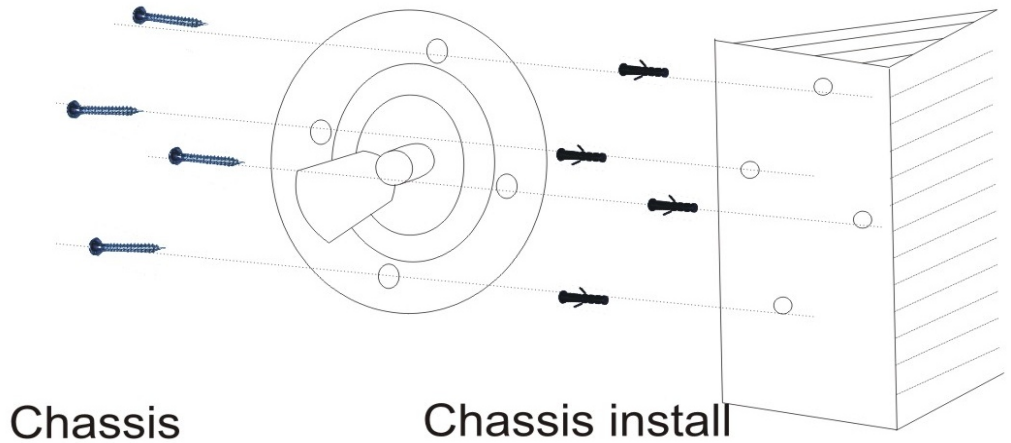
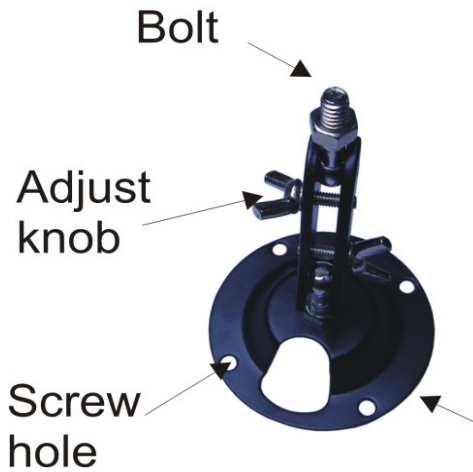
Device	Minimum	Recommended
CPU	Pentium4 1.7GHz	Pentium4 1.7GHz above
RAM	512MB	1GB or above
Network	Ethernet port	Ethernet port
Resolution	800*600 (24bits)	1024*768 (24bits)
Operating system	Windows 2000	Windows XP or Vista
IPCAM	1 or more	1 or more
Windows Media Player	Windows Media Player 9.0	Windows Media Player9.0 or above

Function and Feature

1. Maximum can support 4 sets of Tx camera for Quad function.
2. Transmission distance :150meter in the open air.
3. Send e-mails attachment with image.
4. Video signal filter, for filtrate Active and Invalid channel.
5. Auto Ack&Retransmit, short switch time and intelligent frequency hopping.
6. Motion Detection, manual to record and capture, timer recording
7. Adjustable sensitivity, can adjust the image of all channels.
8. Schedule Monitoring sessions, for timer snap.
9. Support USB1.1, USB2.0 interface. Driver can support Vista/XP/2000/ MAC.
10. Save image on Hard Disk. Automatic Space Management. Stop recoding or capturing still autoamtically on disk full.
11. Support 4 channel video inputting on one computer.
12. Support on Screen Display. Display date and time, or channel description on video.
13. Supports login and logout, by User Name and Password.
14. Supports manual open/close Invalid channel, or add/delete channel description.
15. Receiver site can set AE/resolution/brightness/gamma/saturation/sharpness value of camera.
16. Supports running background stealthy.
17. Operating mode: FHSS. Software selectable channel from 2400MHz to 2525MHz.

Install

Camera install



First, install the camera chassis . use the screw to fixed the stand chassis on the wall , tightening carefully.

Second , allot channel for Cameras.

Select the Camera channel press down the key for 5-10 sec on IR lights board when power on. the lights would flashing and display finish setup.

Third , install the Camera . put the stand Bolt into the camera bolt hole.



Notice: The Receiver as its center, the area of 4.5 meter radius , not to place any Camera.

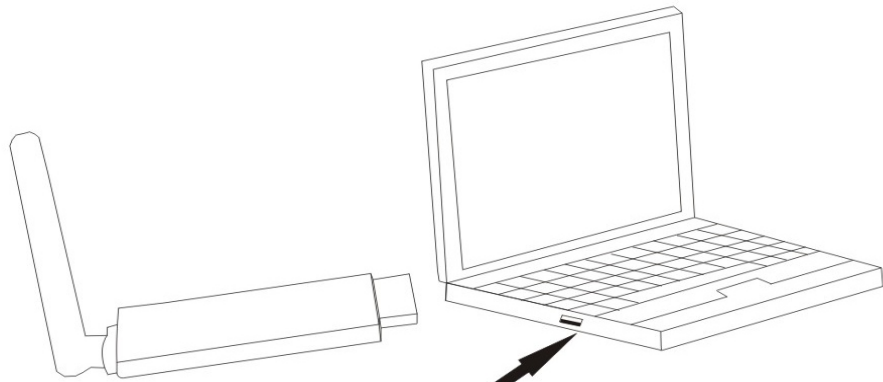
Avoid installed equipment in high temperature or humid environment .



Install

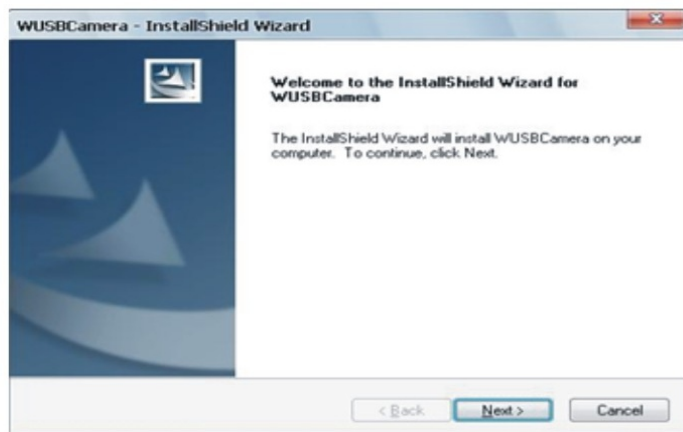
Driver install

First connect the USB receiver to the PC USB port.

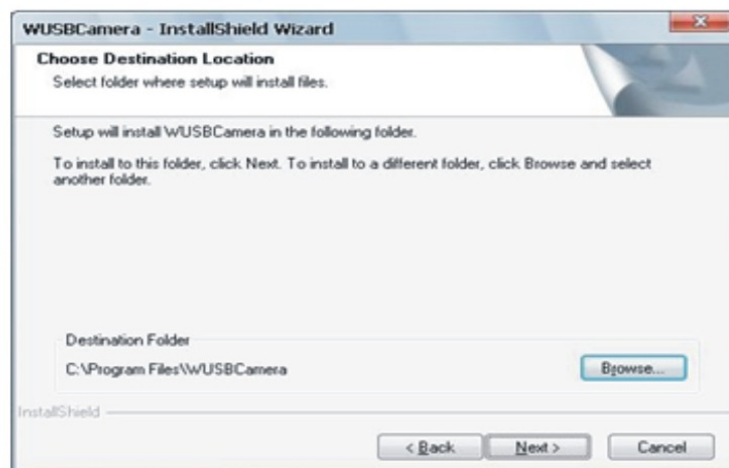


Connection

The light on dongle will work As Connect USB dongle into the PC USB Port. The notification of “find new disk” would appear at the same time. Double click the “”icon of main screen, then appear the below dynamic image.



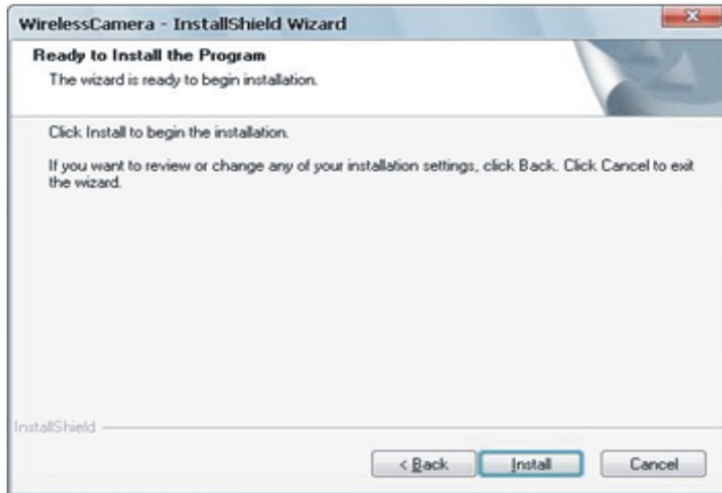
Press “Next” icon, then appear the dialog box.



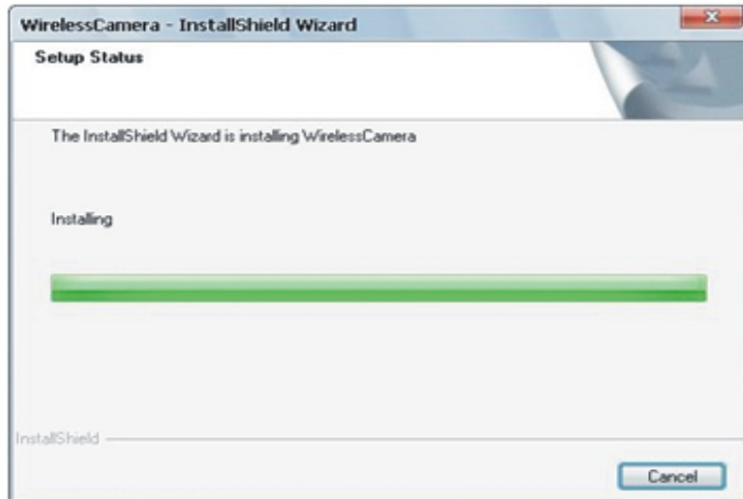
Driver install

Choose the locations of the files is being installed.

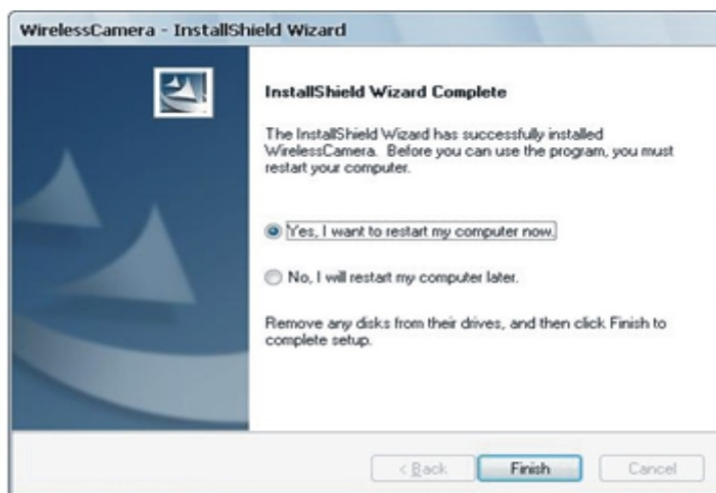
Press “Next” icon:



Click “Install”:

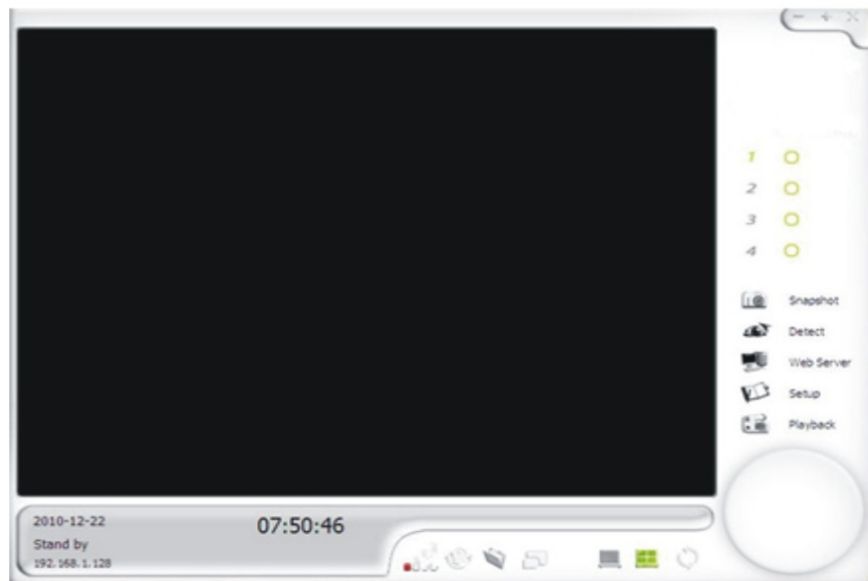


Click “finish”, Then Driver installation is complete.

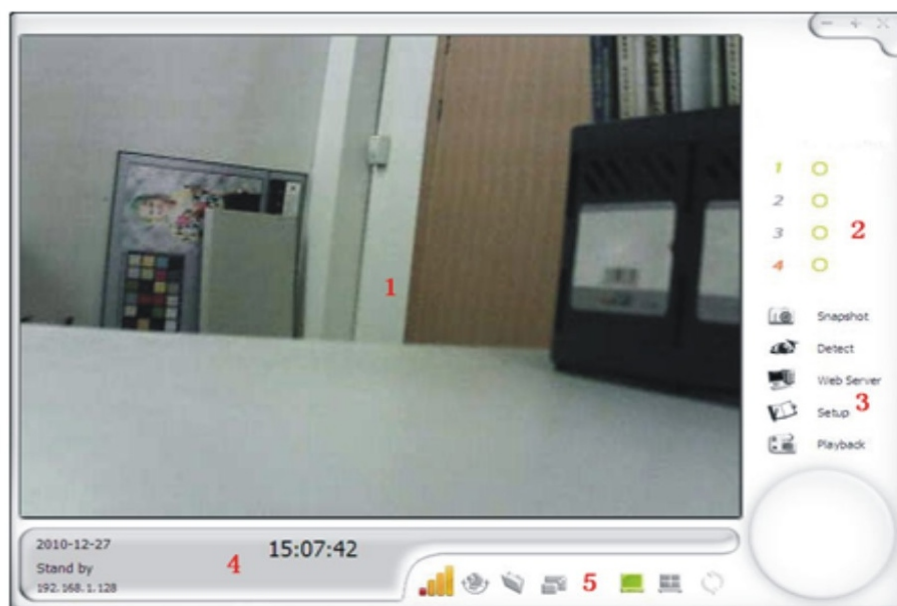


System operate instruction





Press the icon of main screen, then appear the below dynamic image.



Main screen



1. Monitoring Screen: This will display the camera's view. Depending on the configuration, you can have different type of viewing methods on this screen.
2. Channel Status: This area will display the status of individual cameras.

-  : This icon indicates that the camera is monitoring.
-  : This icon indicates that the camera is in standby mode.
-  : This icon indicates that the camera is recording.
-  : This icon indicates that the camera's audio is enabled.

3. Option Menu: This area allows you to do the following.

Snapshot: Takes a snapshot of the camera's view.

Detect: Controls the viewer to go into detection mode or standby mode.

Web Server: Enables web server mode for remote viewing.

Setup: Enters the setup option of software.

Playback: Enters the playback mode to view recorded videos.

4. Channel Information: Displays the current channel's

5. Camera/Screen Control: This area controls the following:

 : Displays the signal strength of wireless cameras.

 : Cruise camera to let it automatically move on its own.

 : Opens the snapshot folders to view captured pictures.

 : Adjusts the screen size on the monitoring screen.

 : Displays one channel on the monitoring screen.

 : Displays multiple channels on the monitoring screen.

 : Cycles the camera to see all area.

Quad View Display

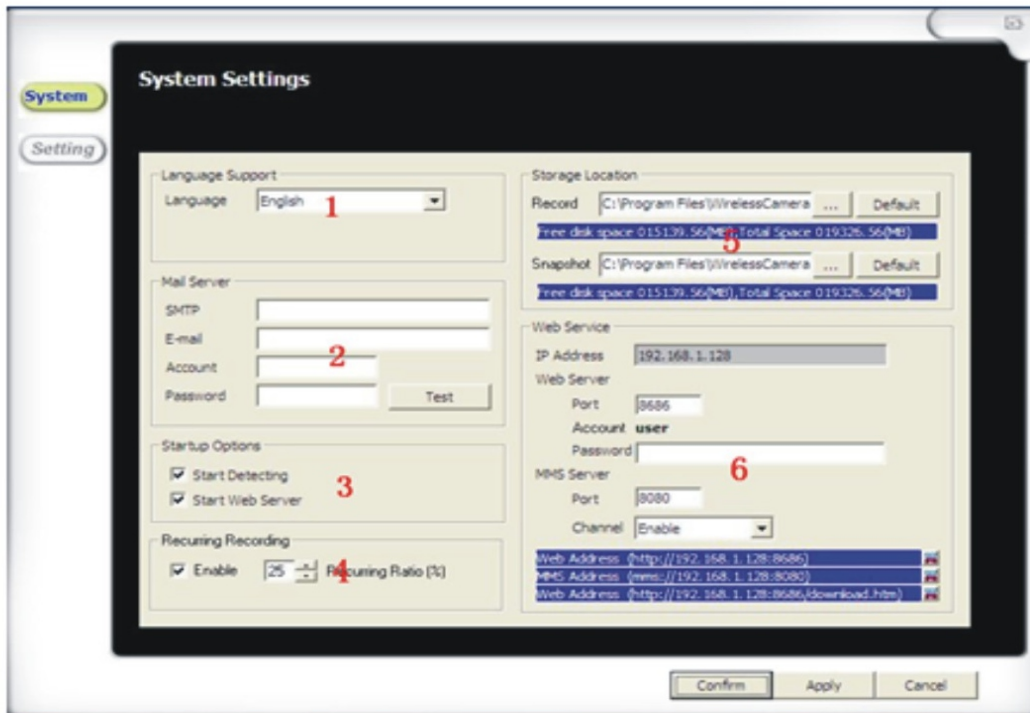


Connect wireless cameras to PC initially, and then reset specific channels to wireless cameras.

As press the icon of quad view, the PC monitor will display quad-view window soon

System setting layout

This section covers the main setup of the Wireless USB Camera Software.

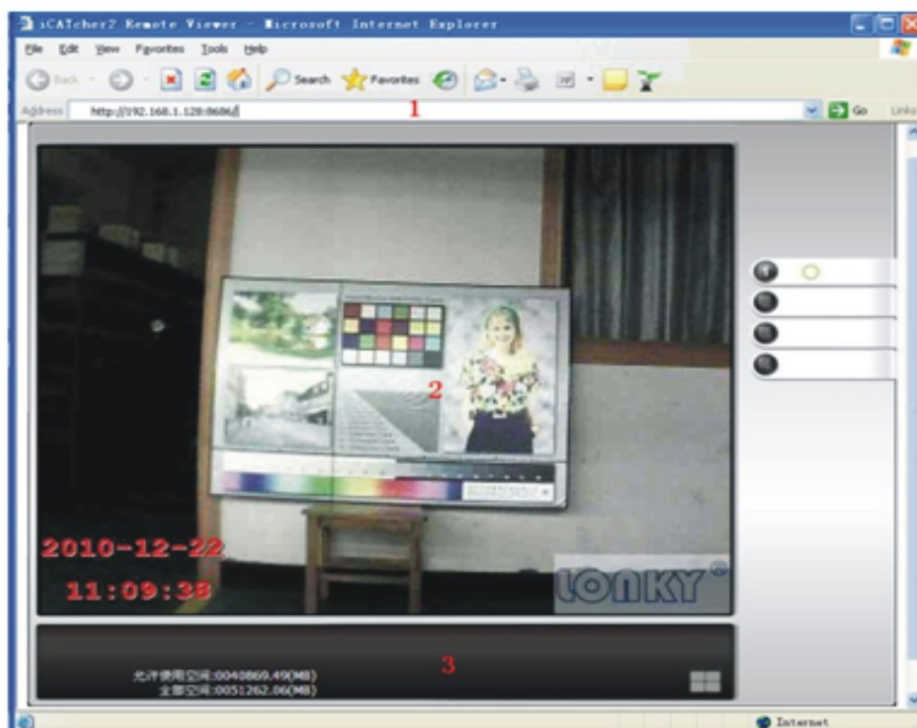


1. Language Support: Changes the interface of the Wireless Guard to the language selected.
2. Mail Server: The mail server settings for users who wish to use the e-mail notification when detection occurs.
3. Start Up Options: Allows user to pre-determine start up options including:
 - Start Detecting: Starts the viewer in detection mode.
 - Start Web Server: Starts the viewer web server.
4. Recurring Recording: Records over older files to save space for the hard disk.
5. Record: for recorded videos and captured images.

- 6. Web Service: Configuration settings for the web serve.
- IP Address: The IP address of the web service for the viewer.
- Web Server Port: The port for the web service.
- Web Server Account: Default is “user”.
- Web Server Password: Password for the web service.
- MMS Server Port: The port for the MMS service.

Web Server

Press “web server” icon of main screen, and open the IE browser to input “http: //web server IP: 8686”, then appear the below dynamic image.

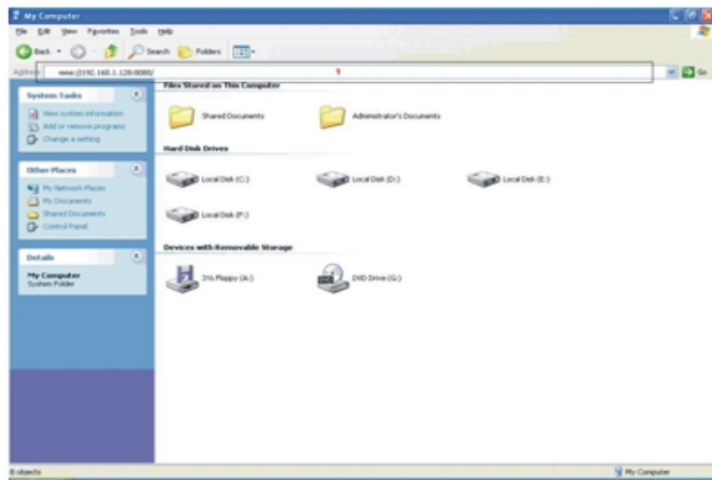


1. Input the IP address of web server.
2. Display dynamic image of video channel.
3. Helpful information.

Notice :If you can't see image please download Java.

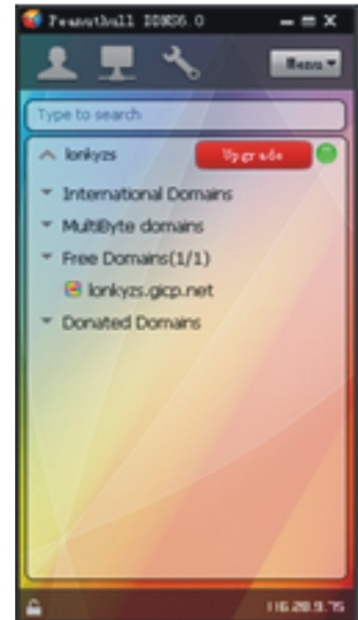
MMS Server

Press “web server” icon of main screen, and setup system setting to MMS channel, then open “my computer”, to input “mms: //web serverIP:8080”.



1. Input the IP address of MMS server.
2. Display dynamic image of video channel.

If you have set the Account and Password in system setup, you must input the correct information before the Web Server.



NOTICE: if you need the remote services, please following steps

1. Please download the newest client from Oray (<http://www.oray.com/>).
2. In order to get a Domain name, you have to register an Oray account. (Such as:lonkyzs.gicp.net)
3. Login ID.
4. Router setup:

Enter the page of router setup.

First ,Virtual Server setup,Press “Add New Item ” icon, then input the following information.

Server Port: consistent with the former.(Web server and MMs server)

IP: IP Address (LAN);

Protocol: ALL.

State: Enabled;

Common service Port: HTTP or WEB.

Add or Modify a Virtual Server Entry

Service Port: (00-XX or XX)
IP Address:
Protocol:
Status:
Common Service Port:

Virtual Servers

ID	Service Port	IP Address	Protocol	Status	Modify
1	8080	192.168.1.128	ALL	Enabled	Modify Delete

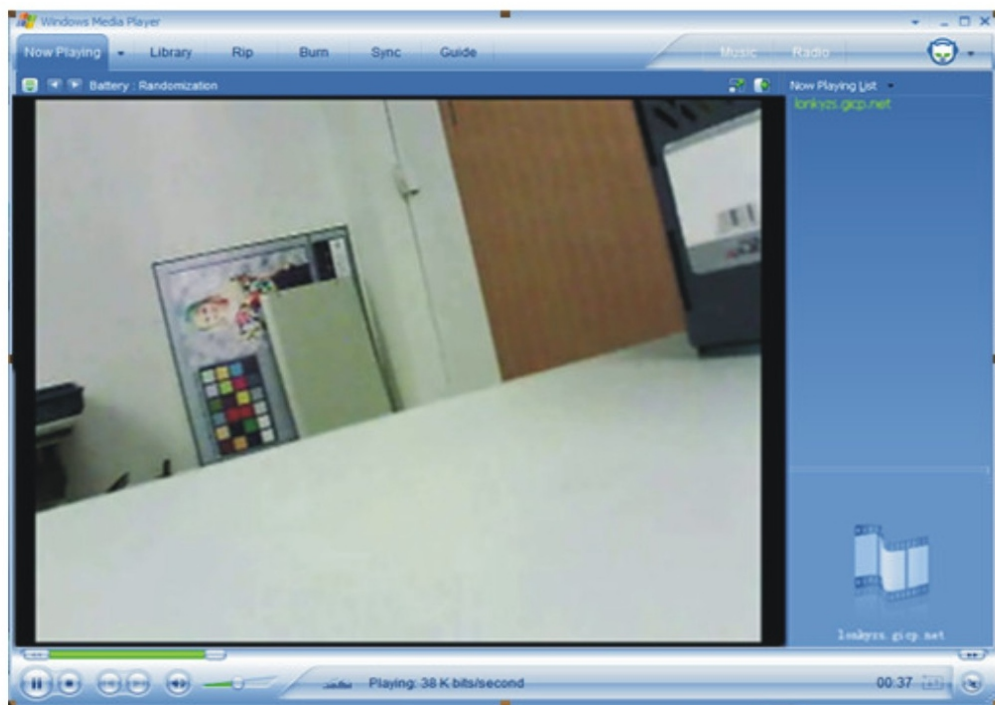
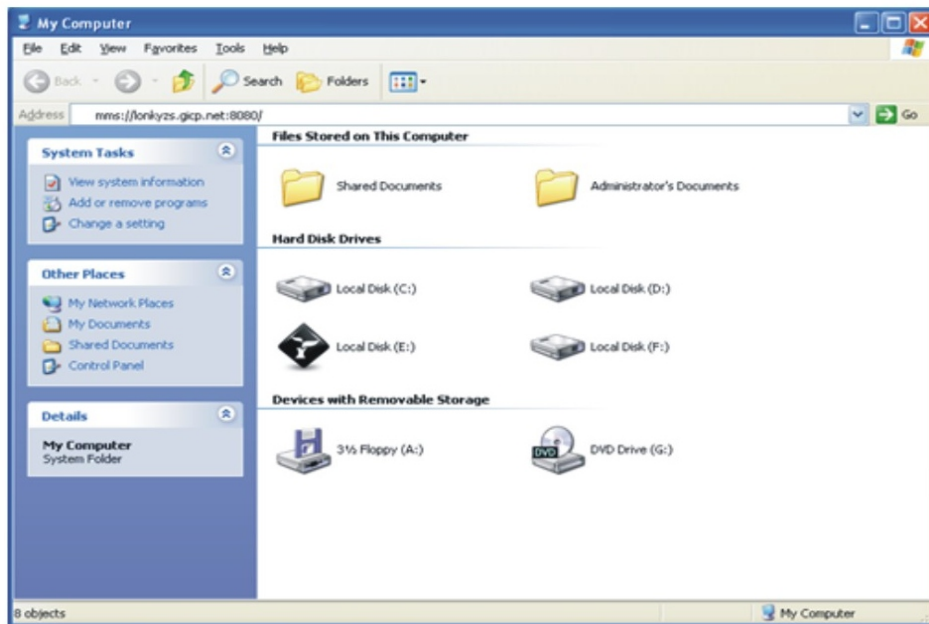
Second ,DDNS setup:

Server Providers choose:"www.Oray.com", then login ID, put in the Domain Name(such as "lonkyzs.gicp.net"), press"save".

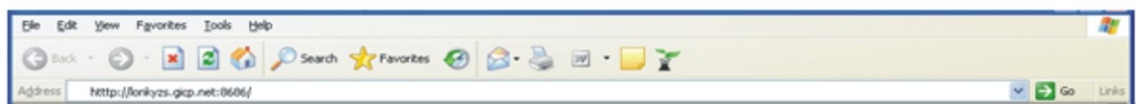
DDNS

Service Provider: [Go to register...](#)
User Name:
Password:
Domain Name:
 Enable DDNS
Connection Status: DDNS not launching!

NOW, you can open the “my computer” input “mms: //lonkyzs.gicp.net (Domain name): 8080(MMS server port)”, then appear the below dynamic image.

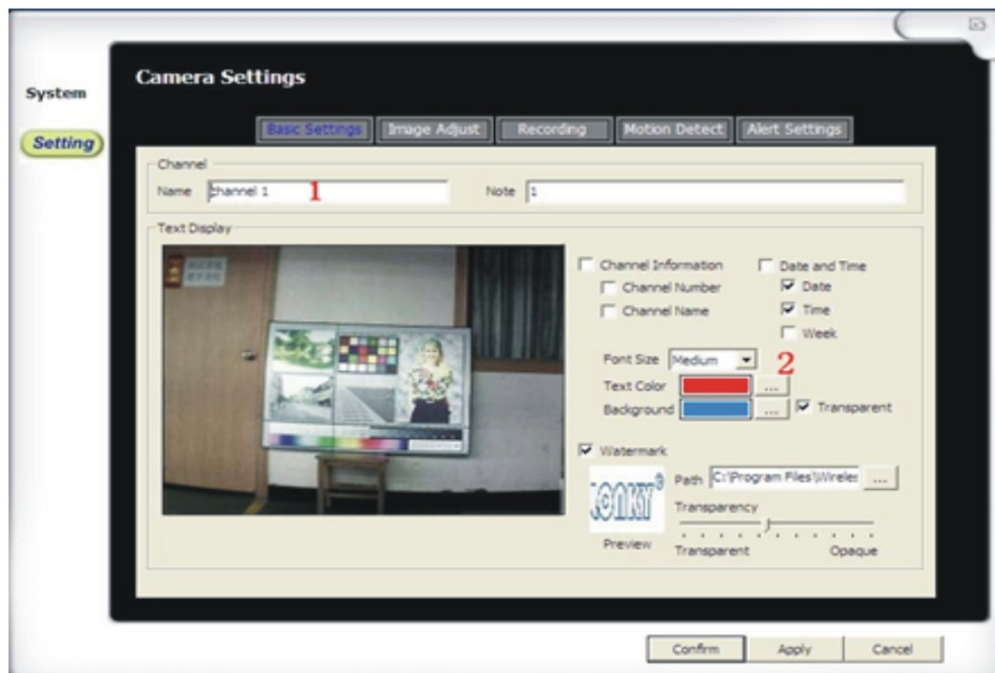


Notice:you also can use the Domain name to get the remote Web server.(such as “http://lonkyzs.gicp.net:8686/”)



Basic setup

This section of allows users to display custom information on the main screen.



1. Name and Note: Defines a personal name and description of the camera.

2. Text Display: Allows customization of what information can be display on the channel's screen.

Channel Information: Check it to show channel number and/or channel name.

Date Time: Check it to show date, time, and/or week.

Font Size: Adjusts the size of the font being displayed.

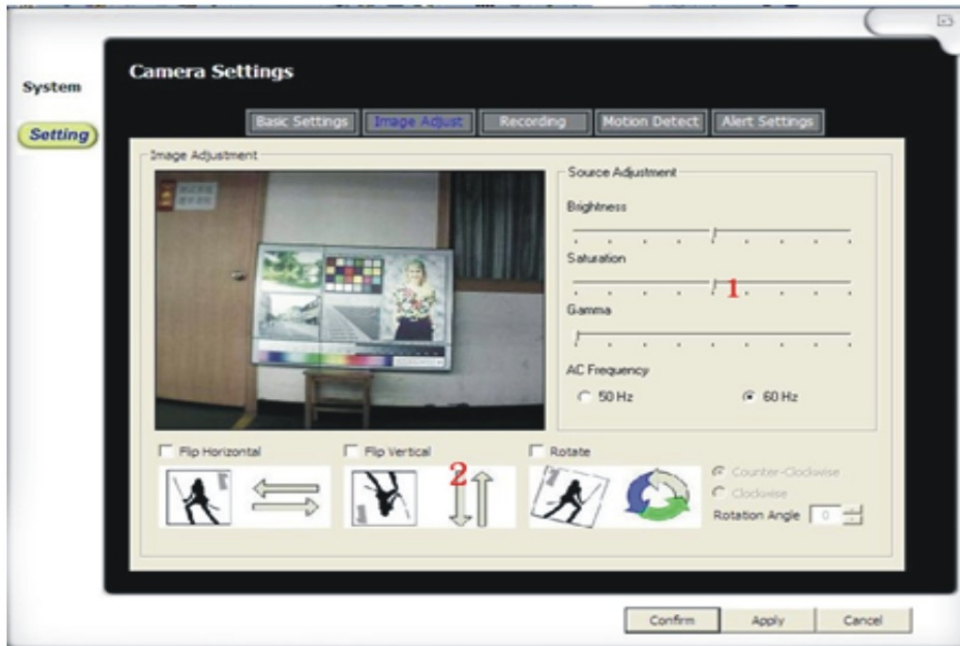
Fore color: The text's color on the screen.

Background: The text's background color on the screen.

Watermark: Check for attaching a watermark image on the screen.

Image adjust

If the camera is mounted in a special way, the section can adjust the image accordingly.



1. Adjust video parameters to process brightness, saturation, and gamma.

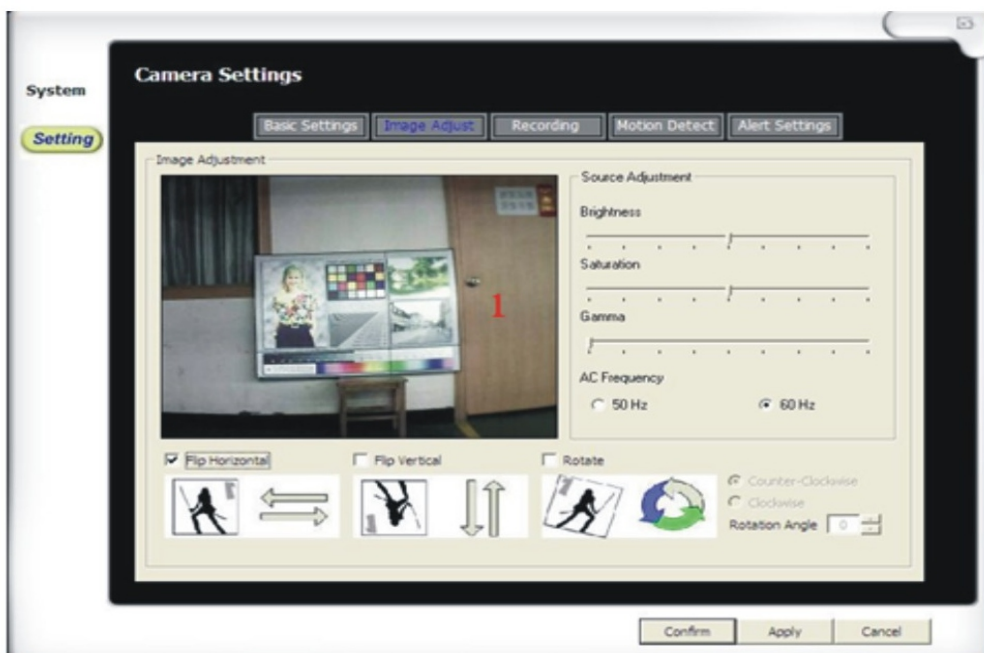
2. Choose from the following to adjust the image:

Flip Horizontal: Flips the image horizontally.

Flip Vertical: Flips the image vertically.

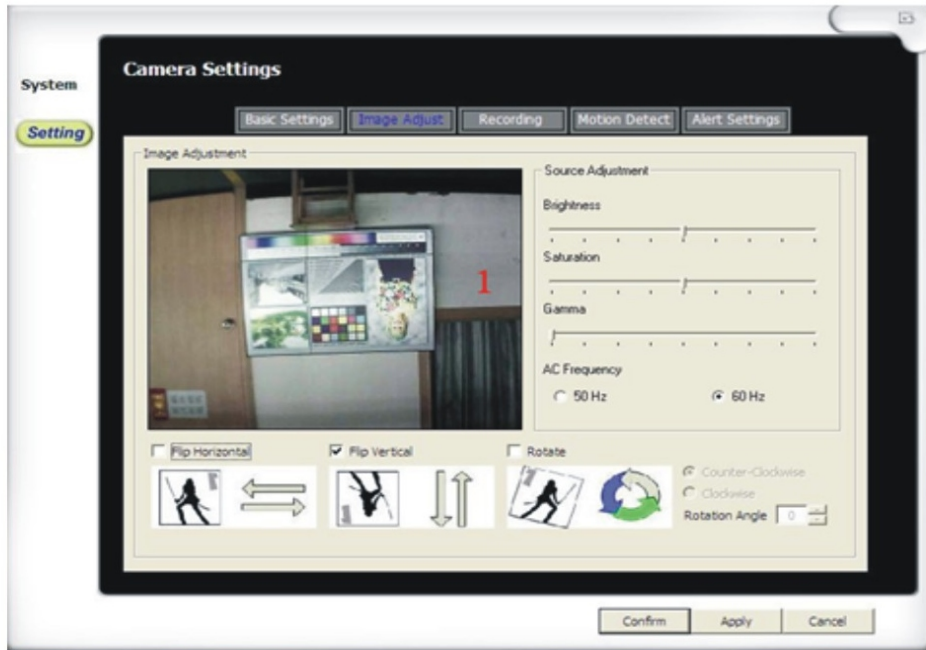
Rotate: Rotates the image accordingly with rotation angle and direction.

Flip Horizontal



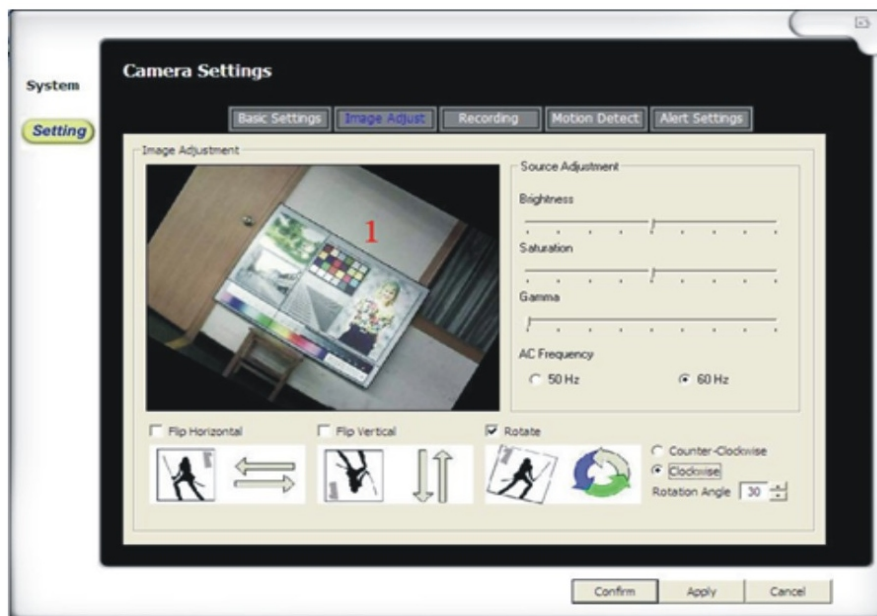
1. Select the icon of “Flip Horizontal”, and then display the flip dynamic image.

Flip Vertical



1. Select the icon of “Flip Horizontal”, and then display the flip dynamic image

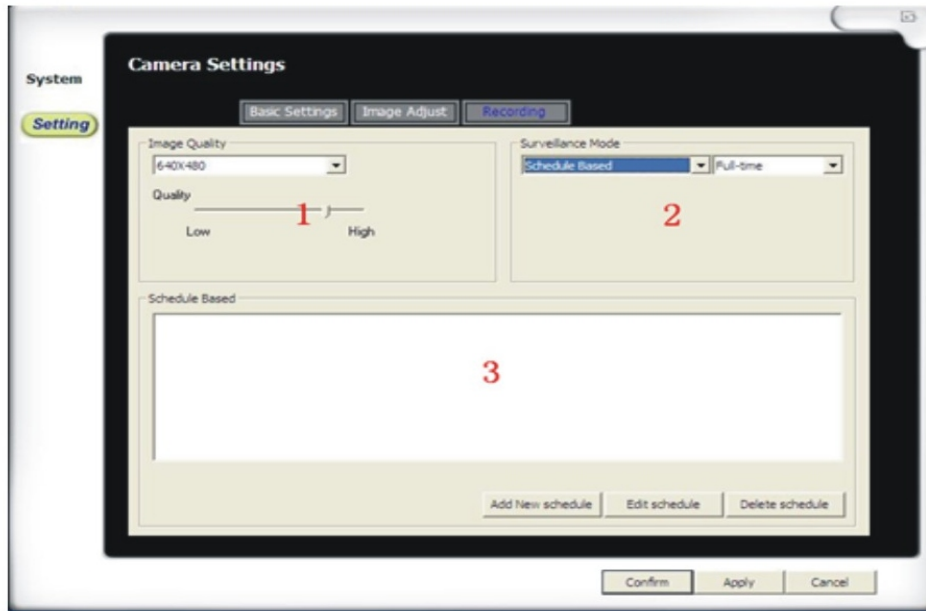
Rotate



1. Select the icon of “rotate”, and the next, “Counter Clockwise\Clockwise”, then fine tune the rotation angle, and then display the rotate dynamic image.

Record setup

This section sets up how recording will be performed under-recording mode.



1. Image Quality: Adjusts the quality of the recording format.

Resolution: Adjust the recording image size.

Quality: How detailed the recording of the image.

2. Surveillance Mode: Adjusts the type of recording it would be triggered with:

First Selection Details:

Schedule: Will go into detection mode and record on user's configured schedule.

Record-at-click: Once in detection mode, it will record in either full time or on detection.

Non-record: Will only monitor in detection mode, no recording will be done.

Second Selection Details:

Full-time: Will always record.

Triggered: Will record a time frame when viewer detects movement.

3. Schedule Based: If "Schedule" is chosen from mode, user can preset a time to record.

Add new Schedule: To add a schedule.

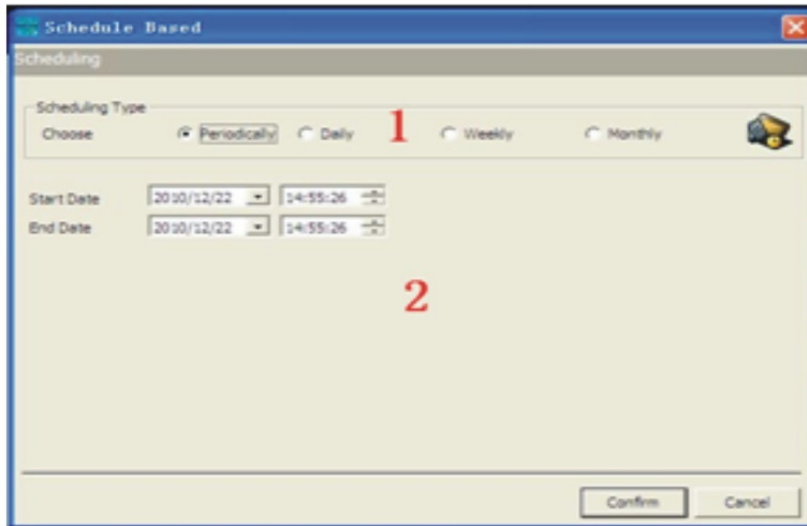
Edit Schedule: To edit an existing schedule.

Delete Schedule: Deletes a selected schedule.

Add new schedule

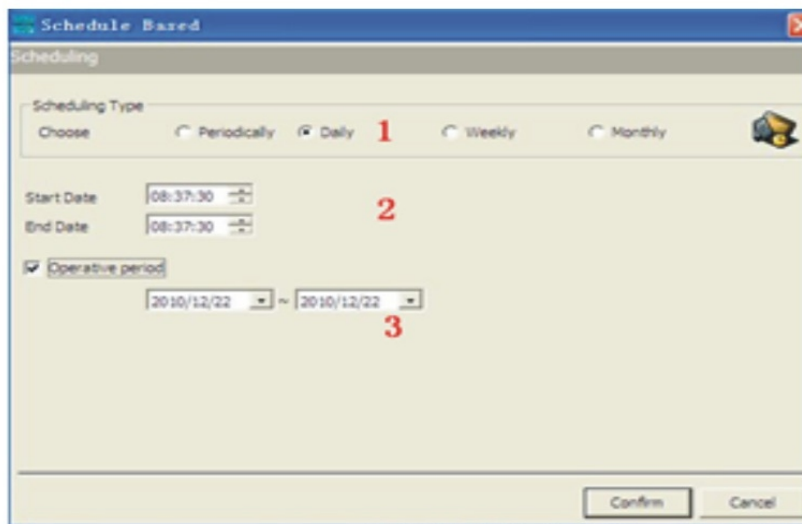
Select the icon “recording”, and the next, “Add new Schedule”, then appear the below image.

Periodically



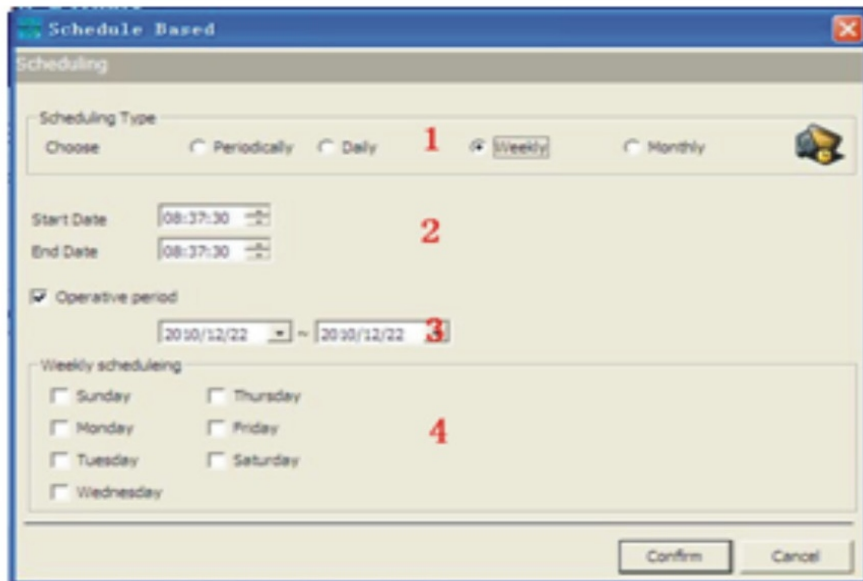
1. Setup the start date and time of Scheduling Type “Periodically”.
2. Setup the end date and time of Scheduling Type “Periodically”.

Daily



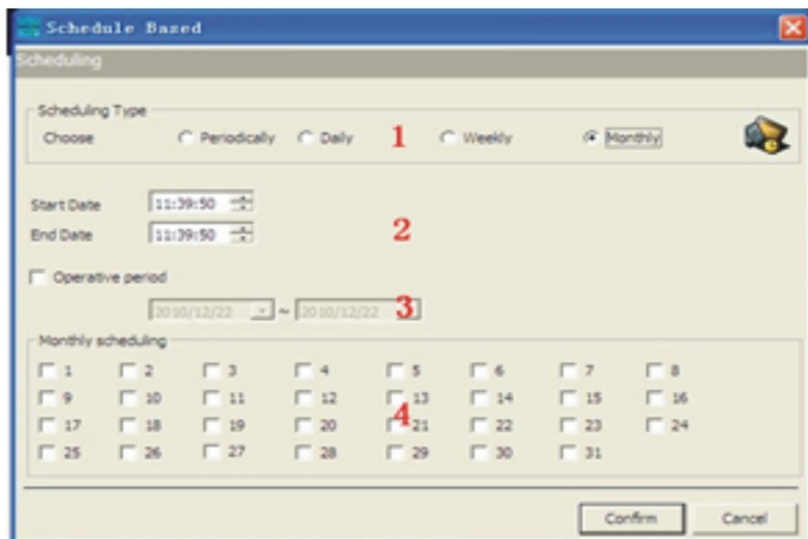
1. Setup the schedule type “daily”.
2. Setup the start time and end time of Schedule .
3. Setup the icon “Operative Period” to specific period.

Weekly



1. Choose the schedule type "Weekly".
2. Setup the start and end time of Schedule.
3. Setup the icon "Operative Period" to specific period.
4. Select the icon to setup weekday of Weekly Scheduling.

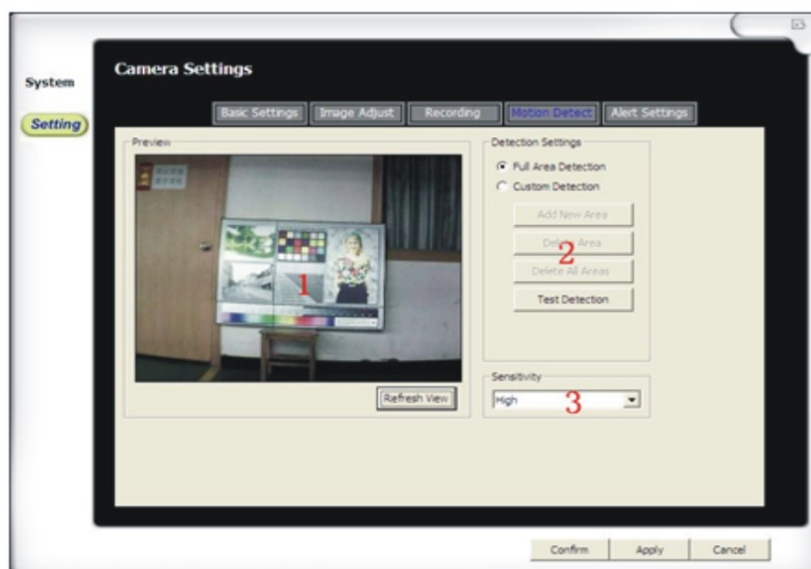
Monthly



1. Choose the schedule type "Monthly".
2. Setup the start and end time of Schedule Type "Monthly".
3. Setup the icon "Operative Period" to specific period.
4. Select the icon to setup day of monthly Scheduling.

Motion Detect

This section will be available if the recording option is set to “Triggered”, this particular area allows user to customize sections of detection and the sensitivity.



1. Displayed Screen: Hit the “Refresh View” button to refresh the image.

2. Block Setting: Allows custom areas to detect on the displayed screen:

Full-area detection: Detects all areas on the screen.

Block detection: Detects user created detection blocks.

Add new block: Create a new block to detect, do this by holding down the right mouse button over the displayed screen area to create a new block.

Delete a block: Select a block on the displayed screen and hit this button to delete it.

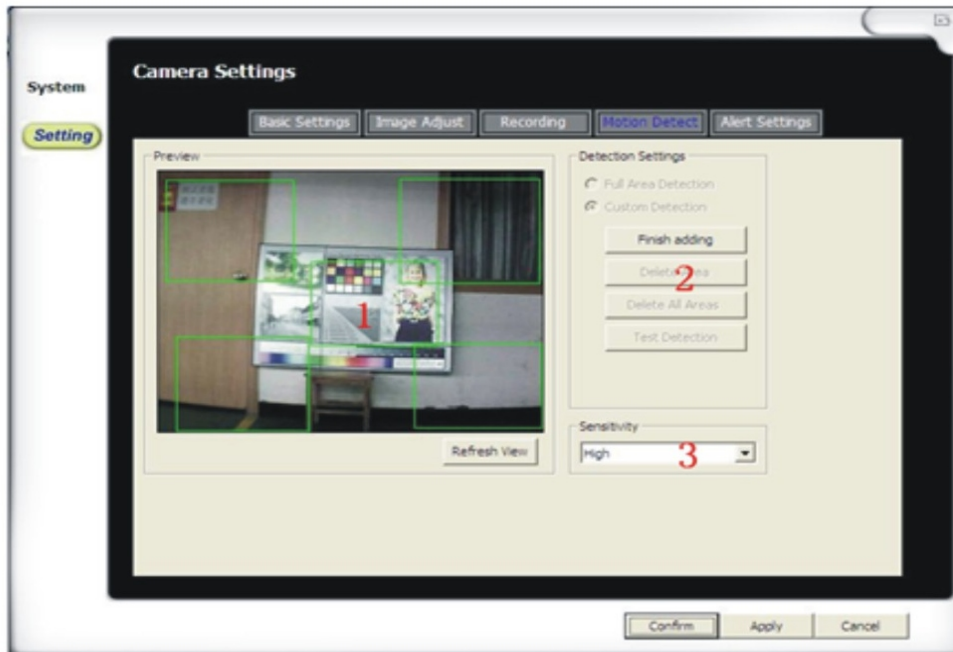
Delete all blocks: Deletes all blocks on the displayed screen.

Test Motion Detect: Test the detection by moving an object in front of the camera. The blocks should change color when it detects motion.

3. Sensitivity: Adjust the sensitivity of the blocks.

Add new Detect Area

Display the preview image and select the icon “Add new Area” to add all the detect blocks, then appear the below image.



1. Use mouse to add all the detect blocks at anywhere of the screen.
2. Detect setting.
3. Sensitivity: adjust the sensitivity of the blocks.

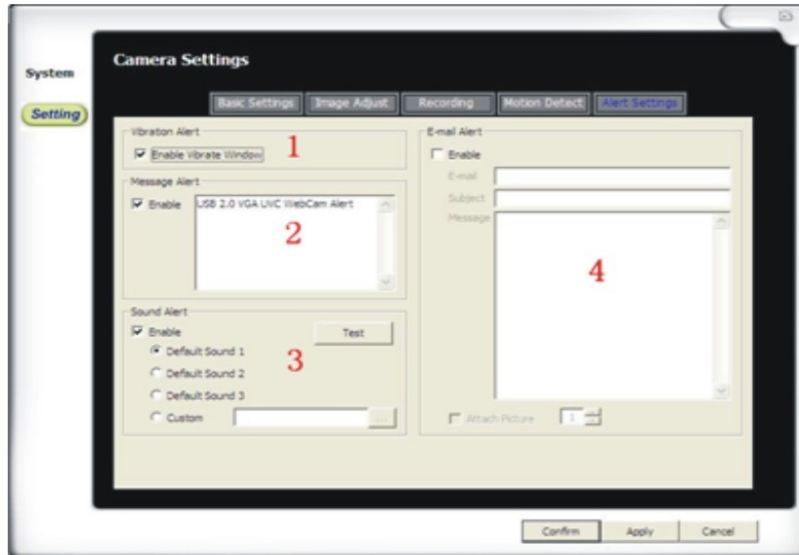
Alert Setting

This section will be available if the recording option is set to “Triggered”,

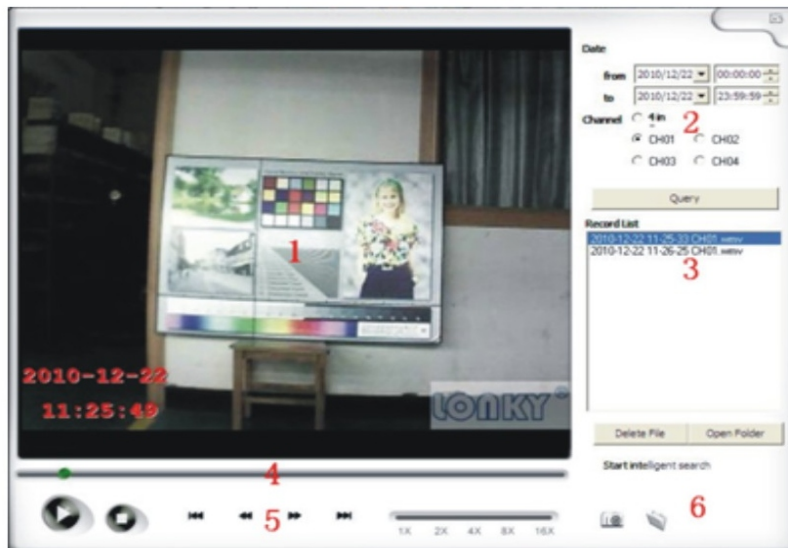
This particular area allows the user to set notification options in the even the viewer detects motion.

1. Vibrational alert: When enabled, it vibrates the whole viewer when motion is detected.
2. Message alert: When enabled, it prompts a message alert on viewer when motion is detected.
3. Sound alert: When enabled it will playback the chosen sound when motion is detected.
4. E-mail alert: When enabled, a message will be sent based on the information filled out.

Playback



This section allows users to playback and search through the recorded videos.



1. Main display screen: This area will display the video output from the recording.
2. Time and channel selection: This filters out when and which channel to be listed in the “Record List”, hit the “Query” button to bring up the list once selected the proper times and channel.
3. Record list: This area is where you choose the video and have the option to delete it and open the file directory of your videos.
4. Video tracker: Use this to track through your video.
5. Playback controls: (From left to right).

Play ; Stop ; Previous track; Rewind; Fast forward; Next track;
 Playback speed (1x, 2x, 4x, 8x, 16x);

6. Capture options: Use the camera to capture a picture on the main display screen and use the folder to access the captured picture(s).

Package list

Quantity Combination Contents	<input type="checkbox"/> 1 Receiver and 1 Camera	<input type="checkbox"/> 1 Receiver and 2 Cameras	<input type="checkbox"/> 1 Receiver and 3 Cameras	<input type="checkbox"/> 1 Receiver and 4 Cameras
2. 4G Wireless Camera	1pcs	2pcs	3pcs	4pcs
Screw Package	1pcs	2pcs	3pcs	4pcs
Camera Stand	1pcs	2pcs	3pcs	4pcs
Wireless USB receiver	1pcs			
DC12V Adapter	1pcs	2pcs	3pcs	4pcs
Driver CD	1pcs			

FQA

1. it prompting no connection device and don't detect codec.
 Reconnect the USB receiver, if it still no connection equipment,
 reinstall driver and restart windows system.

2. it display no image of some camera.

Check the connection of power input, if not effect , you can
 set the channel of camera. (refer to "camera install")

3. it has no image in web server.

Review the "web server" button of main screen.

Check the server port setting.

Review the installation of JAVA.

4. it has no image in remote web server.

Please check the IP address analytical , if not, you can consult"
 MMS server" parts .

5. it has no image in MMS server.

Review the "web server" button of main screen.

Check the server port setting.

Review the edition of Windows Media Player

6. Windows Media Player have no image in MMS server.

Please check the IP address analytical , if not, you can consult"
 MMS server" parts .